



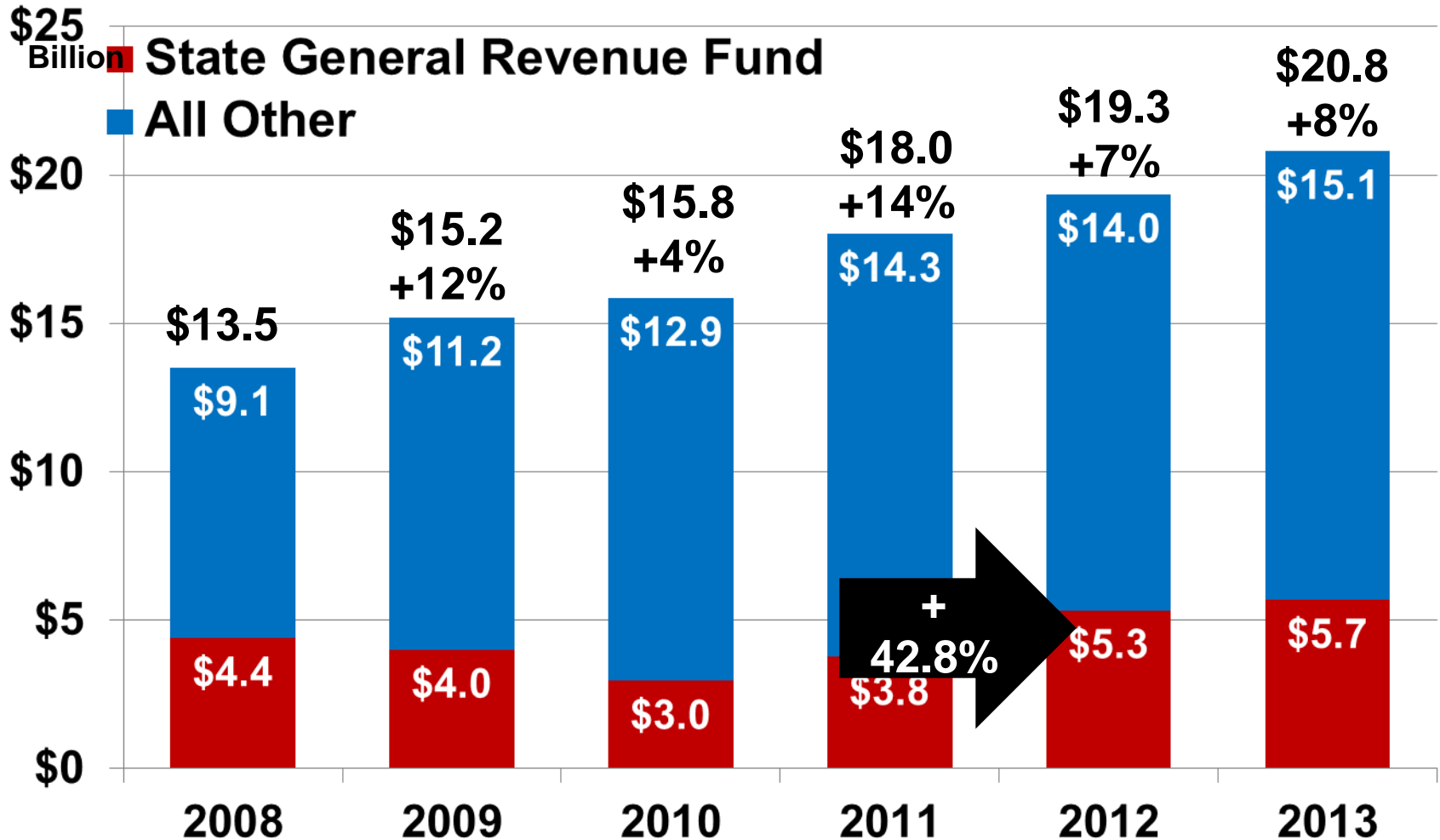
# Ohio's Projected Population with Severe Disabilities by Type

Year	Total Population	Physical and/or Cognitive	Intellectual and/or Developmental	Severe Mental Illness	Total Population with Severe Disability
2005	11,464,045	178,241	36,597	89,673	304,511
2007	11,584,158	181,220	36,899	90,454	308,573
2010	11,764,330	185,672	37,352	91,626	314,650
2015	11,960,871	195,507	37,875	96,037	329,419
2020	12,177,862	208,154	38,485	101,490	348,129



# Ohio Medicaid Spending Trend

*9 percent average annual growth, 2008-2011*



Governor's Office of Health Transformation

Source: Office of Health Transformation Consolidated Medicaid Budget, All Funds, All Agencies; actual SFY 2008-2010 and estimated SFY 2011-2013; "All Other" includes Federal Funds and Non-General Revenue Funds (non-GRF)



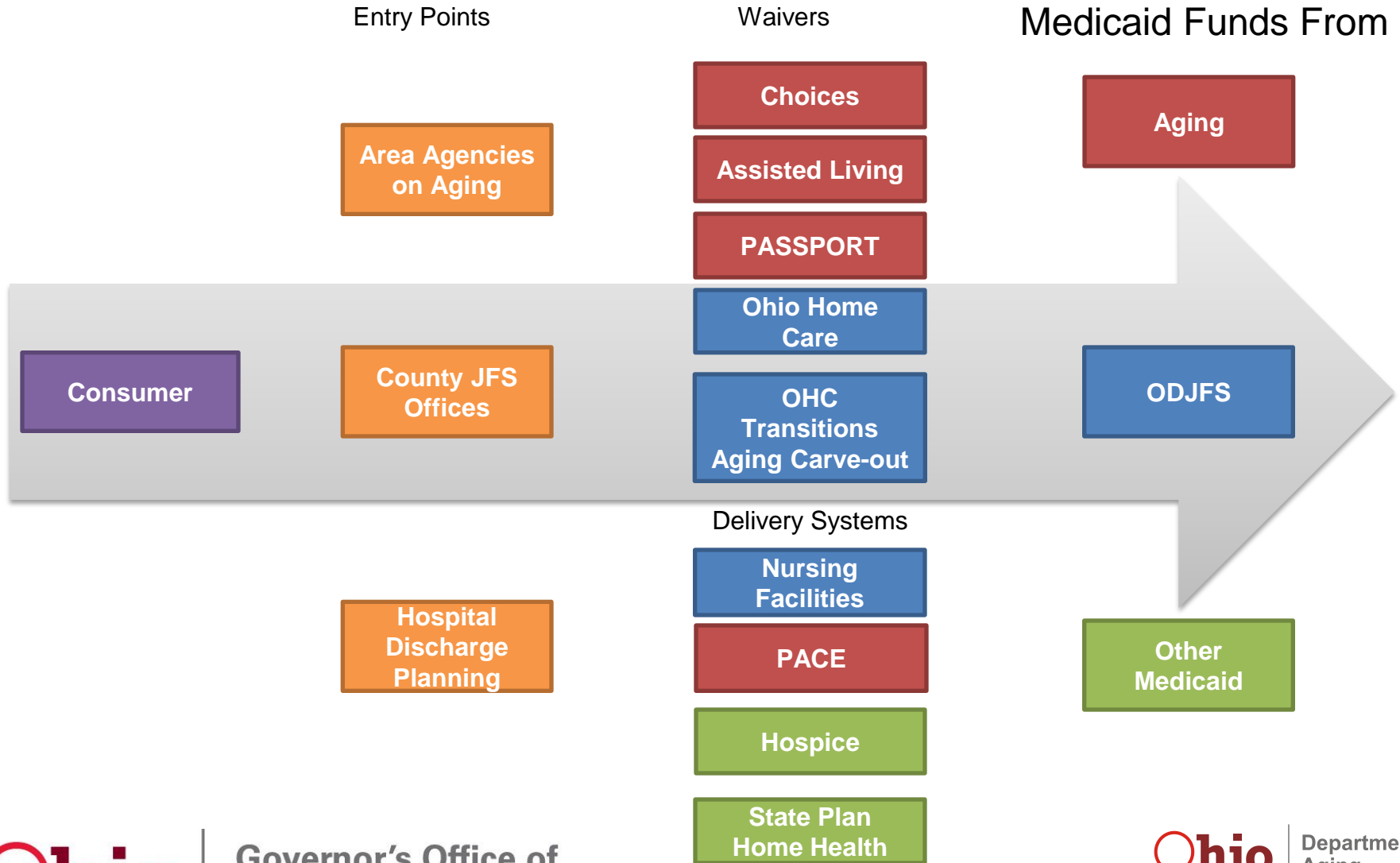








# Current Long-Term Care Delivery System



**Governor's budget recommendation:**

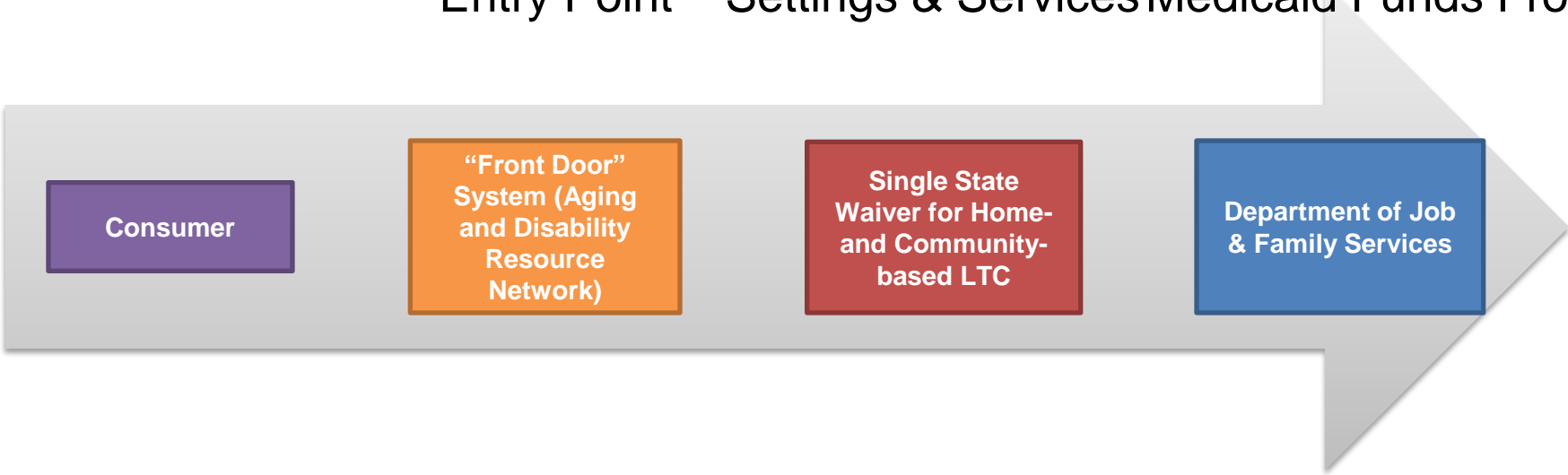
# **Create a Unified Long-Term Care System**

- Make services seamless for consumers and families
- Transfer Medicaid waiver funding to ODJFS 600-525
- Create a single point of access by consolidating PASSPORT, Ohio Home Care, Transitions/Aging, Choices, Assisted Living
- Create a clear “front door” into the delivery system (ADRN)
- Keep PASSPORT, Choices, Assisted Living open to natural enrollment – no waiting lists!!

- Balance: To define the goal of balance for the home-/community-based services and nursing facility services as “Ohioans have access to the long-term services and supports they need in the setting of their choice.” Intermediate (three-year) performance indicators:
  - *Adults with physical/cognitive disabilities, age 60 and older will reflect a 50/50 institutional/HCBS distribution. (In 2007 distribution was 60/40.)*
  - *Adults with physical/cognitive disabilities, age 59 and under will reflect a 40/60 institutional/HCBS distribution. (In 2007, distribution was 50/50.)*

# Unified Delivery System

Entry Point    Settings & Services    Medicaid Funds From





# Governor's Budget Assumes:

- Provider rate reduction of 3% (30% for Emergency Response System). Rate reduction also applies to assisted living and PACE.
- 15% reduction in PASSPORT site operations costs.
- 8% reduction in per member per month costs for PASSPORT in 2012 and 15% additional reduction in 2013



# Governor's Budget Assumes:

- Utilizing other sources (e.g., Medicare for medical equipment and supplies)
- New “group transportation” rate













# Consumer Direction

- We're adding a consumer directed service delivery option to PASSPORT
- Similar to Choices and the Home Care Attendant Service in Ohio Home Care waiver.
- Consumer is employer of record and is assisted by a financial management service (Acumen)
- Training requirements are specified by ODA

